

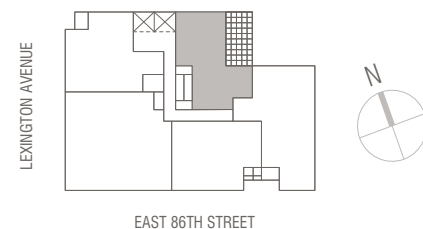
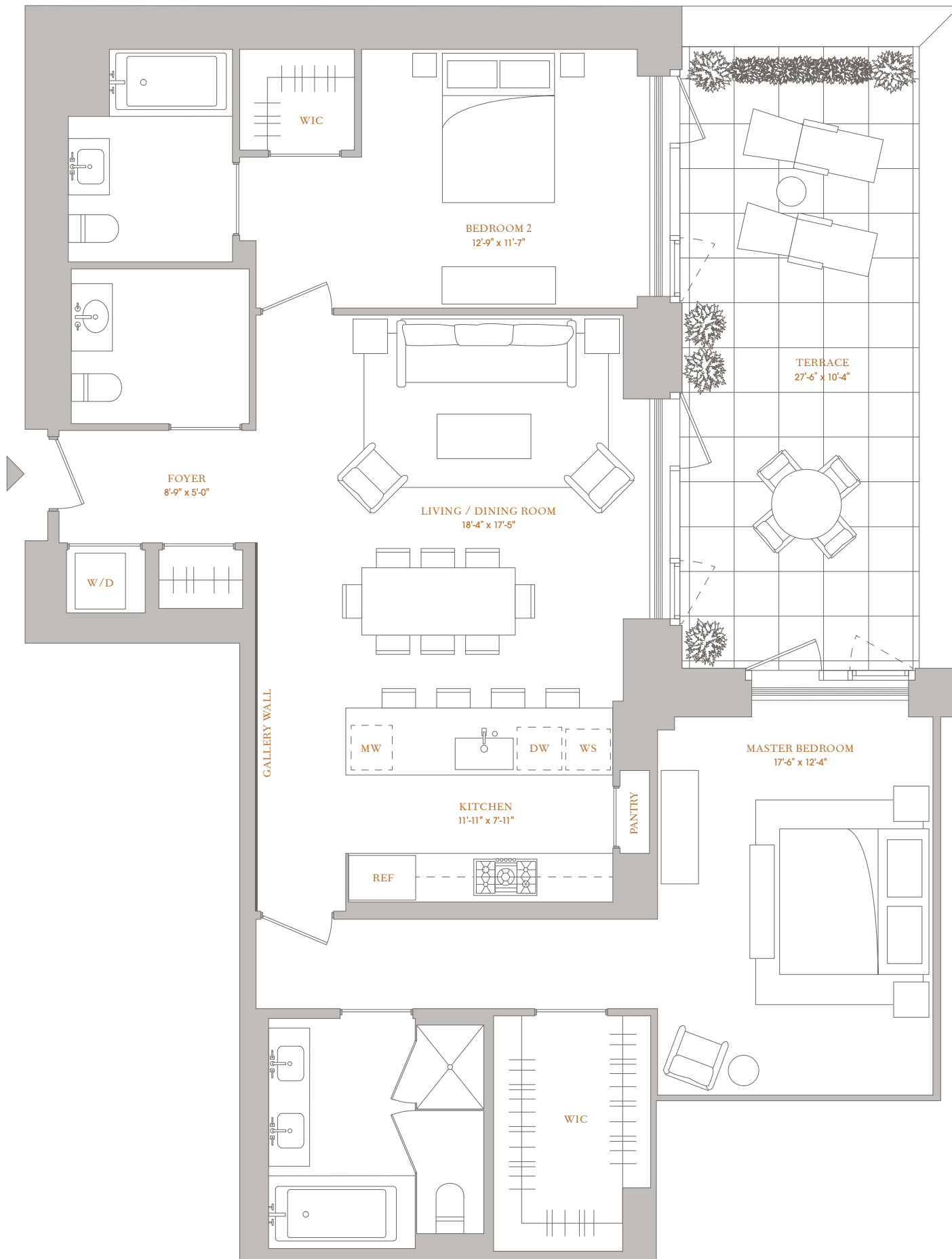


THE HAYWORTH

1289 LEXINGTON AVENUE

5E

2 BEDROOMS | 2.5 BATHS | TERRACE
INT: 1,588 SF | 147.5 SQ M
EXT: 367 SF | 34.1 SQ M



All dimensions are approximate and subject to normal construction variances and tolerances. Square footage exceeds the usable floor area. Sponsor reserves the right to make changes in accordance with the terms of the Offering Plan. Plans and dimensions may contain minor variations from floor to floor. Units will not be offered furnished. Furniture layouts shown are for concept only. No representation or warranty is made that a Unit Owner will be able to implement the furniture layout shown above. The complete offering terms are in an offering plan available from Sponsor. File No. CD17-0315. Sponsor: Monty Two East 86Th Street Associates Llc, C/O Ceruzzi Properties, 400 Park Avenue, 5Th Floor, New York, NY 10022. Equal Housing Opportunity.

